

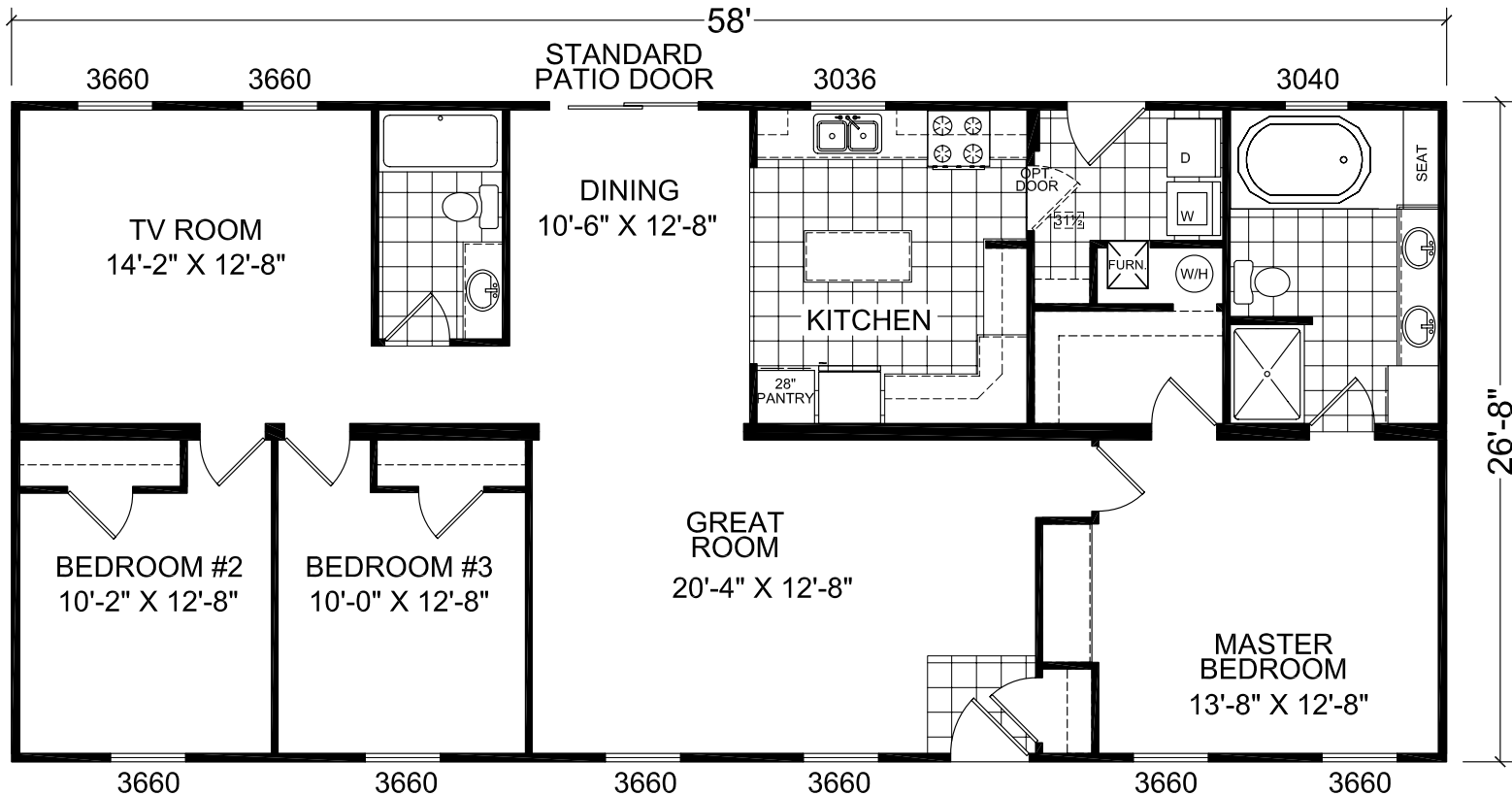
**Carmen**  
Brookgreen II



**Factory Expo**  
"Factory Direct Value" HOME CENTERS

**3 Bedroom, 2 Baths**  
**Approx. 1,546 SQ. FT.**

Last Updated: 9-19-08



I authorize Factory Expo Homes to build my house, per this plan.  
X \_\_\_\_\_  
Customer Signature/Date

**1-800-504-3238 www.fbhexpo.com 1-800-504-3238 www.fbhexpo.com 1-800-504-3238**

Important: Due to our policy of continuing improvement, all information in our brochures may vary from actual home. The right is reserved to make changes at any time, without notice or obligation, in colors, materials, specifications, processes, and models. All dimensions and square footage calculations are nominal and approximate figures. Please check with your sales person for specific and current information.